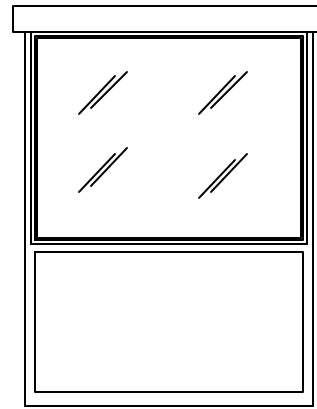


IMPORTANT NOTE- VERIFY BOOTH DESIGN IS COMPATIBLE WITH ON SITE CONDITIONS FOR PROPER ACCESSIBILITY.

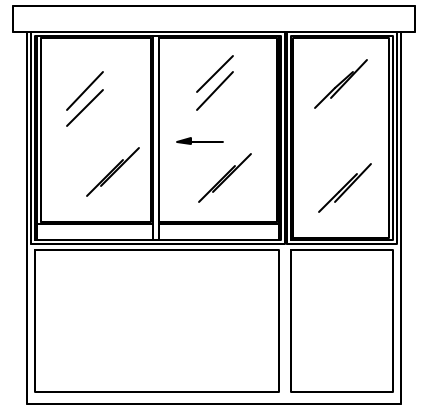
PLAN VIEW (N.T.S.)

2"x2" ANCHOR TAB W/ 5/8" DIA. HOLE (TYP 4)

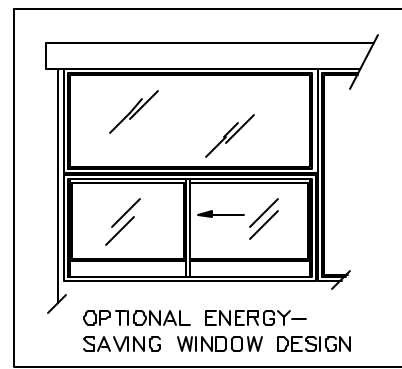
HDD 3066



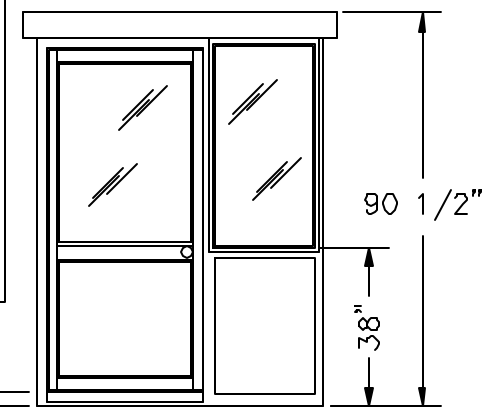
ELEVATION A



ELEVATION B



OPTIONAL ENERGY-SAVING WINDOW DESIGN



4 1/2"

ELEVATION C

STANDARD ITEMS FOR A DISABLED ACCESSIBLE PC-DA75SW STEEL BUILDING (REFER TO DURASTEEL SPECIFICATIONS FOR TYPICAL CONSTRUCTION)

- ① - 100 AMP SINGLE PHASE 12 CIRCUIT MAIN LOAD CENTER
- ② - 115V DUPLEX, 230V OUTLET
- ③ - 40 WATT LIGHT FIXTURE
- ④ - 22" DEEP SHELF
- ⑤ - 3" OVERHANG EXTERIOR ROOF (OPTIONAL)

STANDARD FEATURES DESIGNED INTO BOOTH TO MEET ADA GUIDELINES



- * MANEUVER WITHIN BOOTH- 60" DIAMETER
- * DOOR CLEARANCES- 32" CLEAR OPENING, 1/2" HIGH THRESHOLD
- * SHELF- 32" A.F.F.
- * CASHIER WINDOW- 32" A.F.F.
- * CEILING HEIGHT- 80"

(ACCESSIBLE ROUTE TO BOOTH- BOOTH CAN BE DESIGNED TO MEET ON SITE CONDITIONS, EXAMPLE; DOOR LOCATION AND THRESHOLD HEIGHT)

PORTA-KING BUILDING SYSTEMS

4133 SHORELINE DRIVE EARTH CITY, MISSOURI 63045
1-800-456-5464 FAX 314-291-2857 www.portaking.com

TITLE	DURASTEEL MODEL PC-DA75SW
-------	---------------------------