

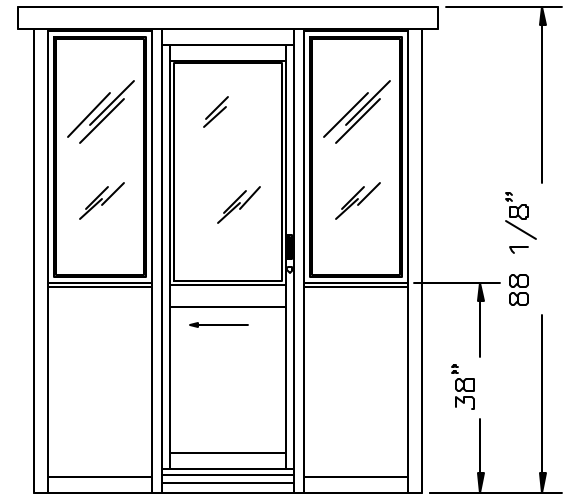
\* MODEL 7664SL- 75"x63"

PLAN VIEW  
(N.T.S.)

DOORS AVAILABLE BOTH SIDES-SUFFIX DSL  
CASHIER WINDOW AVAILABLE  
IN SLIDING DOOR-SUFFIX CSL

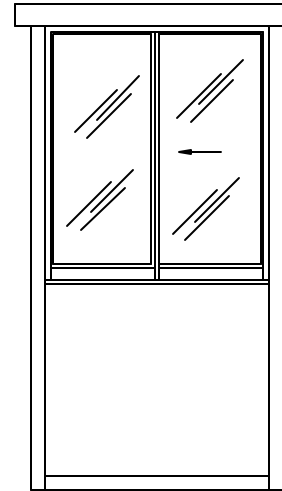
STANDARD ITEMS FOR A 7648CSL DURALUMINUM BUILDING

- ① — 100 AMP SINGLE PHASE 12 CIRCUIT MAIN LOAD CENTER
- ② — 115V DUPLEX, 230V OUTLET
- ③ — 40 WATT LIGHT FIXTURE
- ④ — 22" DEEP SHELF
- ⑤ — 3" OVERHANG EXTERIOR ROOF (OPTIONAL)  
(REFER TO DURALUMINUM SPECIFICATIONS  
FOR TYPICAL CONSTRUCTION)

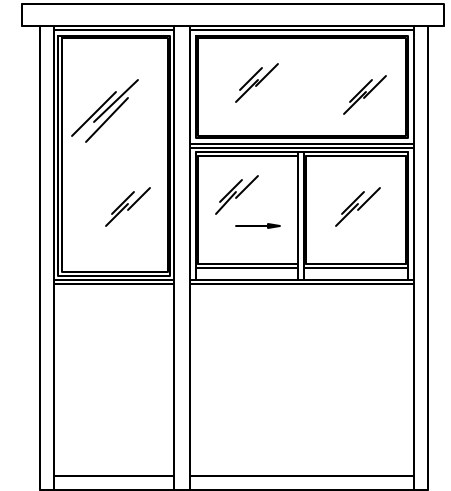


NOTE : BUILDING  
HEIGHT WITHOUT  
EXTERIOR ROOF- 86 9/16"

ELEVATION A



ELEVATION B



ELEVATION C

PORTA-KING BUILDING SYSTEMS

4133 SHORELINE DRIVE EARTH CITY, MISSOURI 63045  
1-800-456-5464 FAX 314-291-2857 www.portaking.com

TITLE

DURALUMINUM MODEL 7648CSL