

93 7/8"

93 7/8"

10"

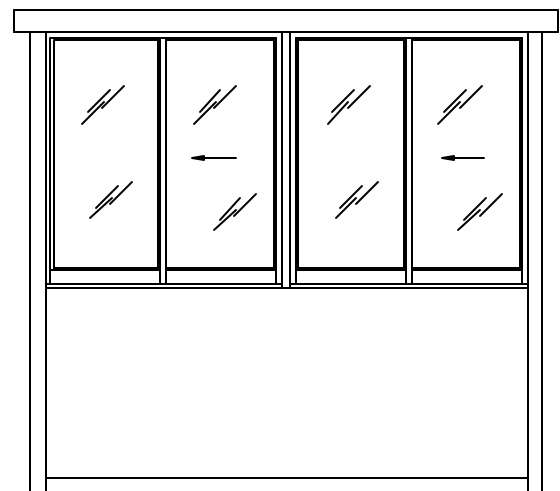
4"

6"x12" CONDUIT  
ACCESS CUTOUT

HDD  
3066

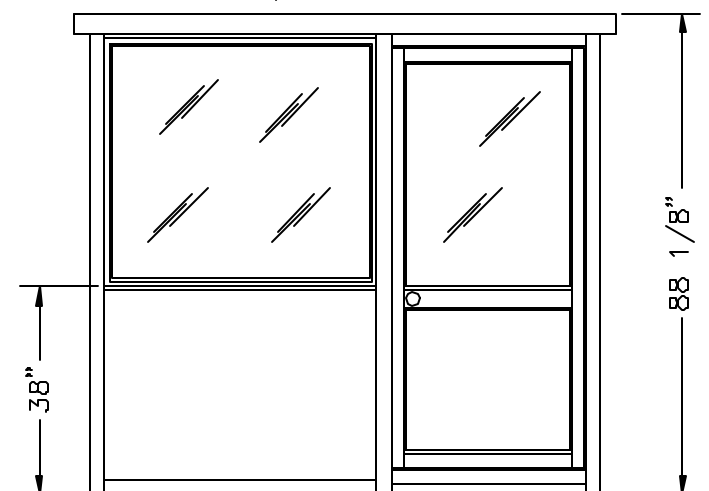
A

PLAN VIEW  
(N.T.S.)



NOTE : BUILDING  
HEIGHT WITHOUT  
EXTERIOR ROOF- 86 9/16"

ELEVATION A



ELEVATION B

STANDARD ITEMS FOR A 9696SW DURALUMINUM BUILDING

- ① — 100 AMP SINGLE PHASE 12 CIRCUIT MAIN LOAD CENTER
- ② — 115V DUPLEX, 230V OUTLET
- ③ — 80 WATT LIGHT FIXTURE
- ④ — 3" OVERHANG EXTERIOR ROOF (OPTIONAL)  
(REFER TO DURALUMINUM SPECIFICATIONS  
FOR TYPICAL CONSTRUCTION)

**PORTA-KING** BUILDING SYSTEMS

4133 SHORELINE DRIVE      EARTH CITY, MISSOURI 63045  
 1-800-456-5464      FAX 314-291-2857      www.portaking.com

TITLE	DURALUMINUM MODEL 9696SW
-------	--------------------------